

Mission Challenge



MA 001

10 pcs 



0



6



0



3



1



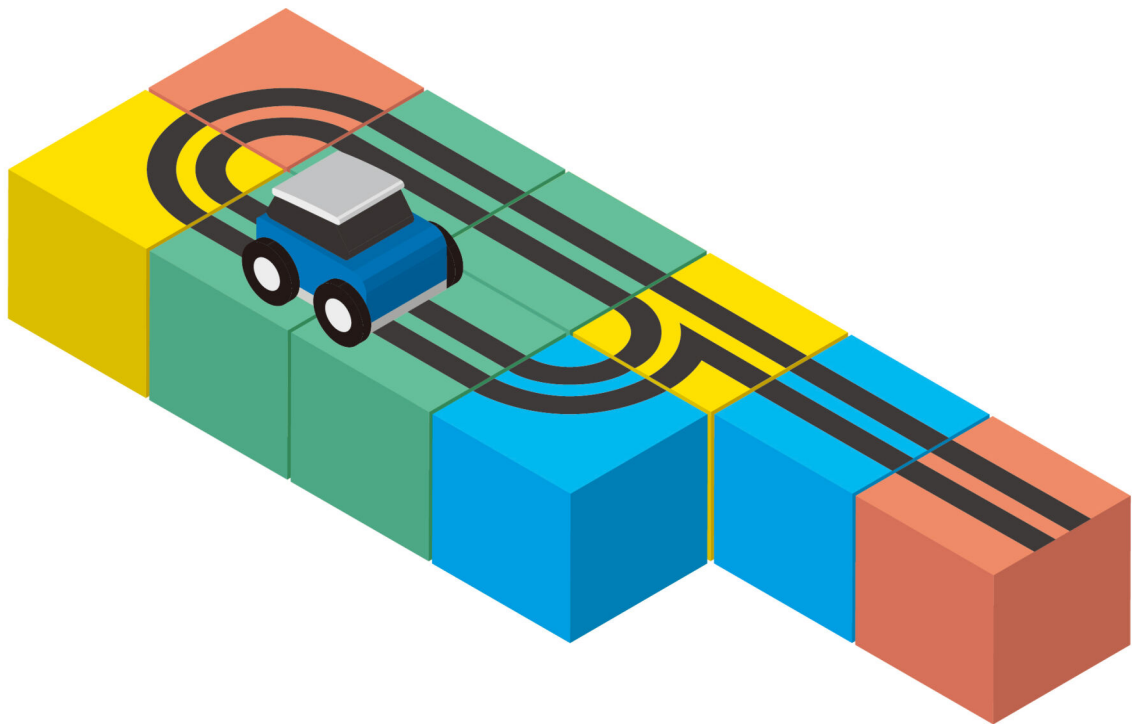
0



0



0



Mission Challenge



MA 002

10 pcs 



1



7



0



3



0



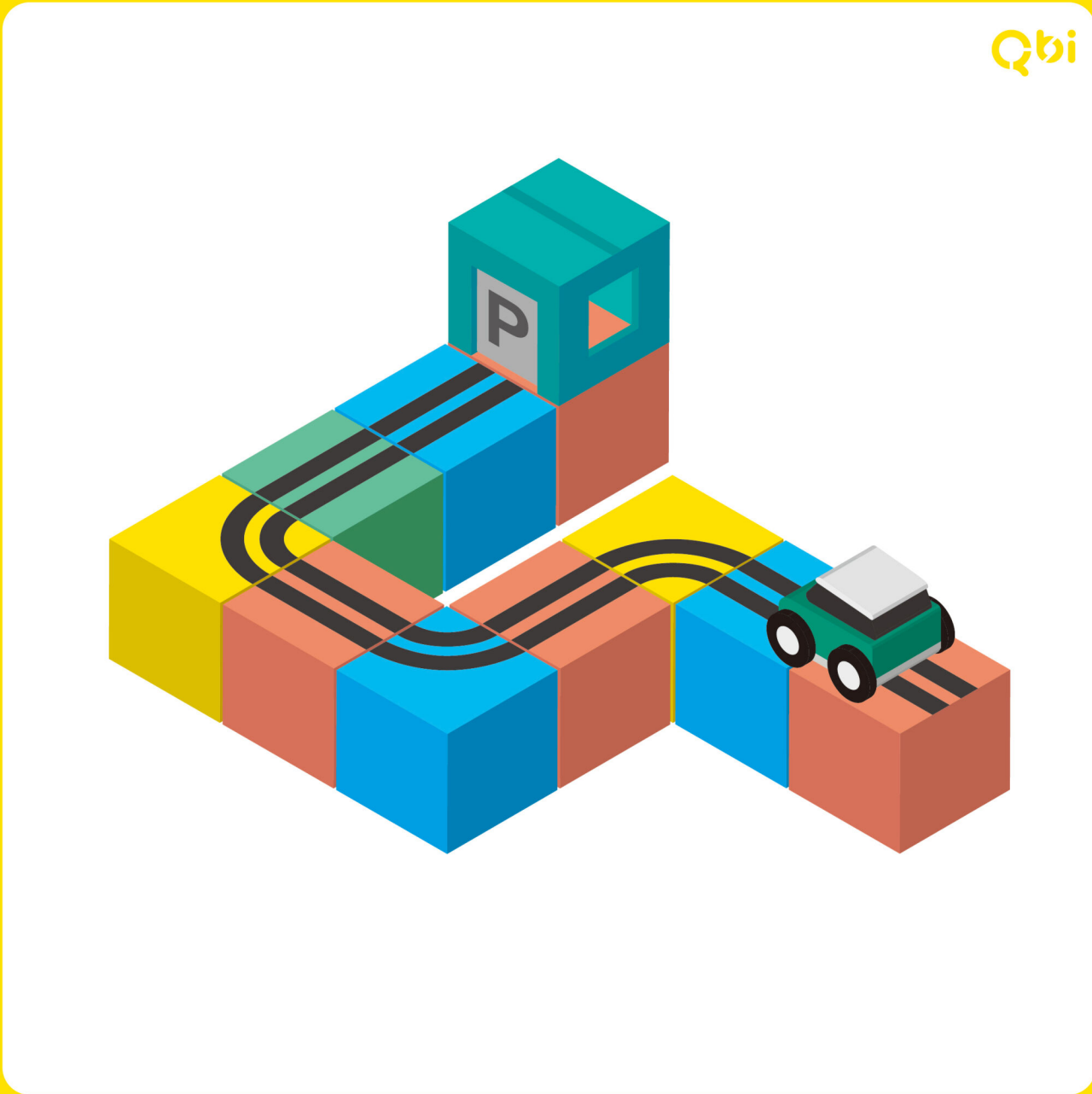
0



0



0



Mission Challenge



MA 003



10 pcs 



1



5



0



4



0



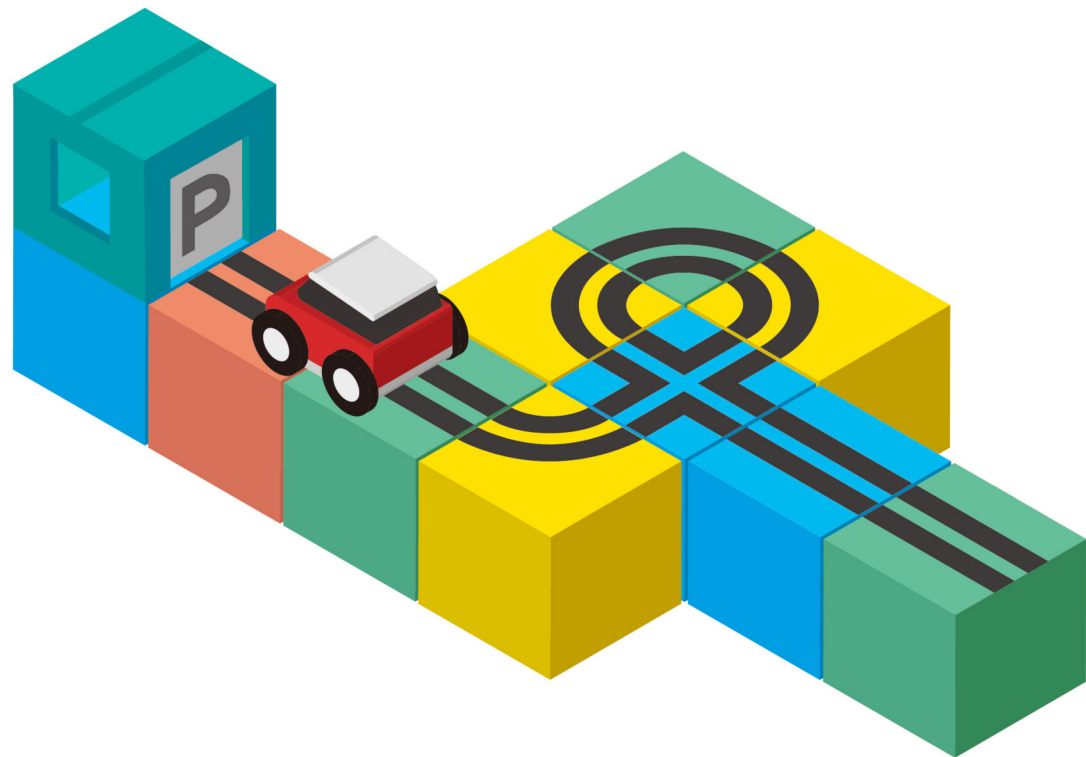
1



0



0



Mission Challenge



MB 001

10 pcs 



1



7



0



1



0



0

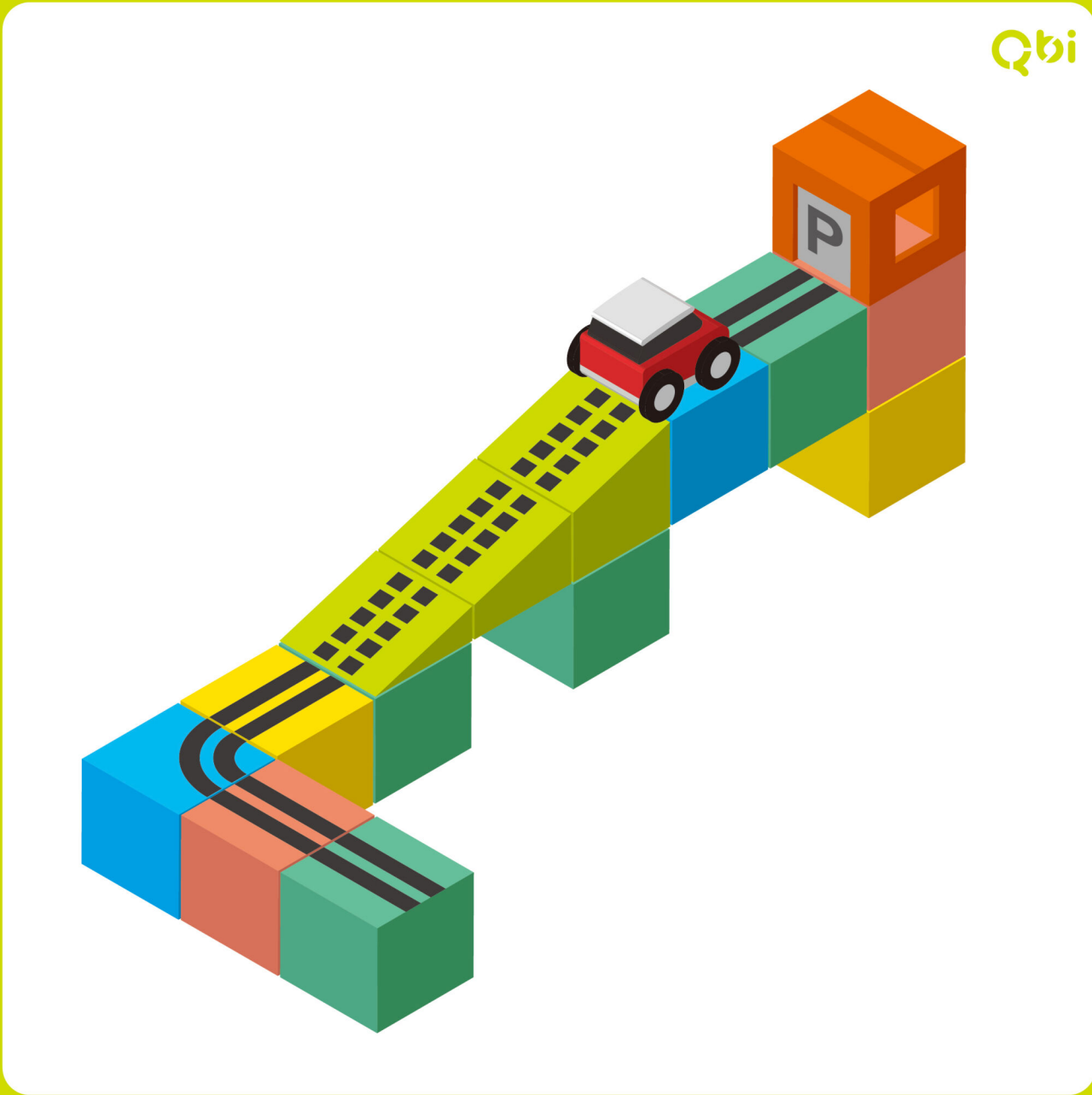


0



1

Qbi



Mission Challenge



MB
002

10 pcs 



1



6



0



0



0



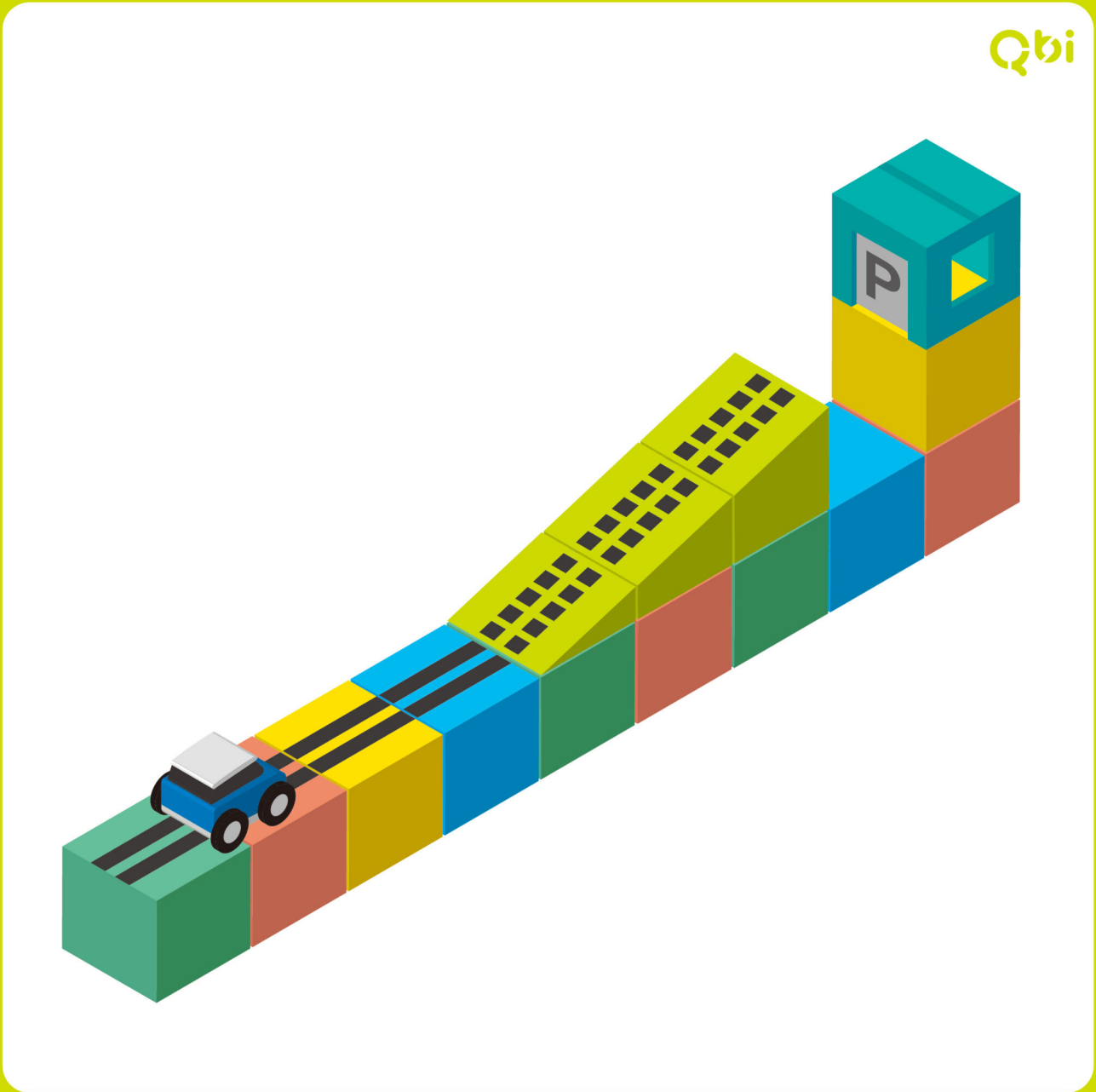
0



0



1



Mission Challenge



**MB
003**

10 pcs 



1



8



0



0



0



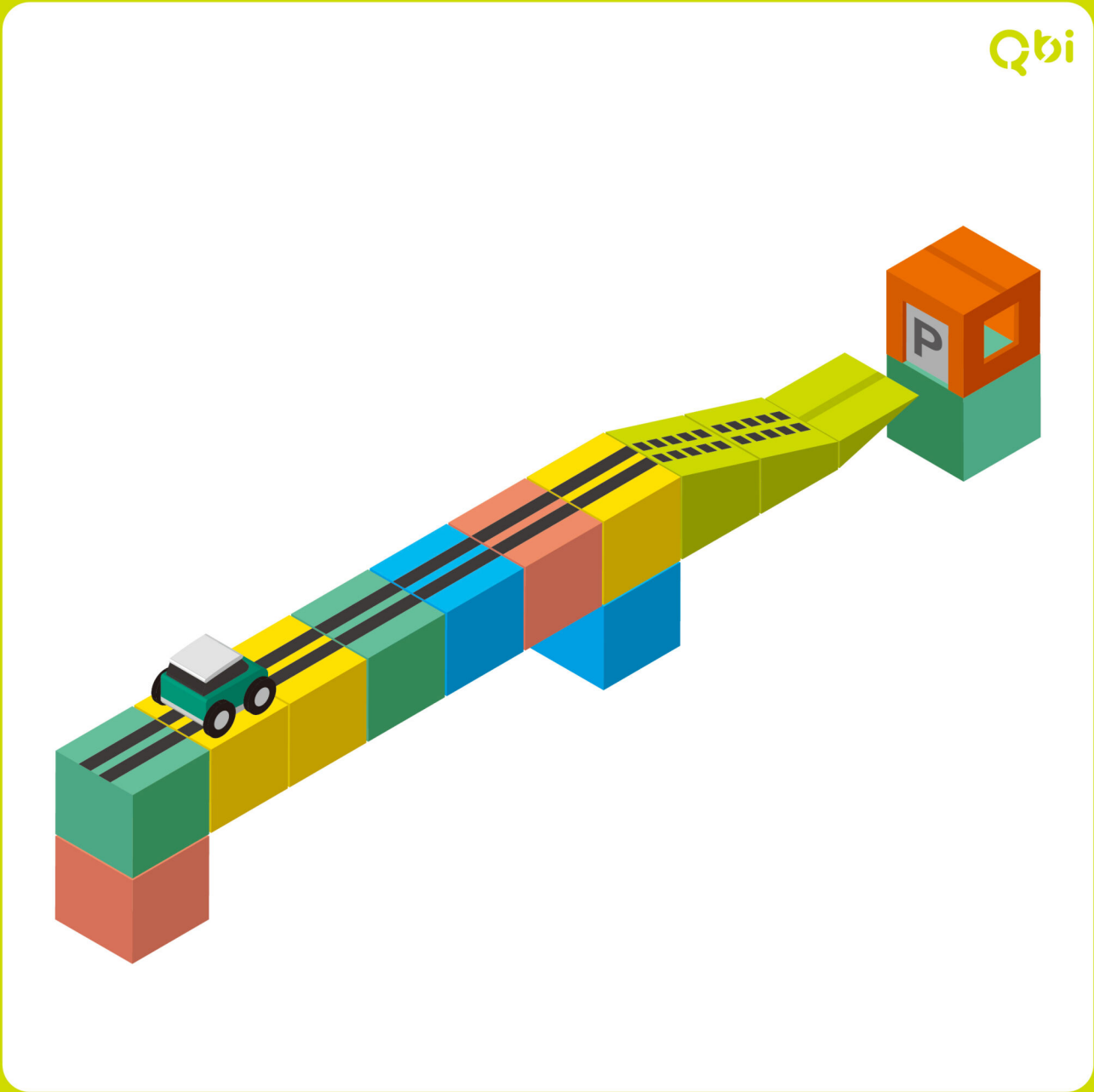
0



0



1



Mission Challenge



MB 004

10 pcs 



1



5



0



4



0



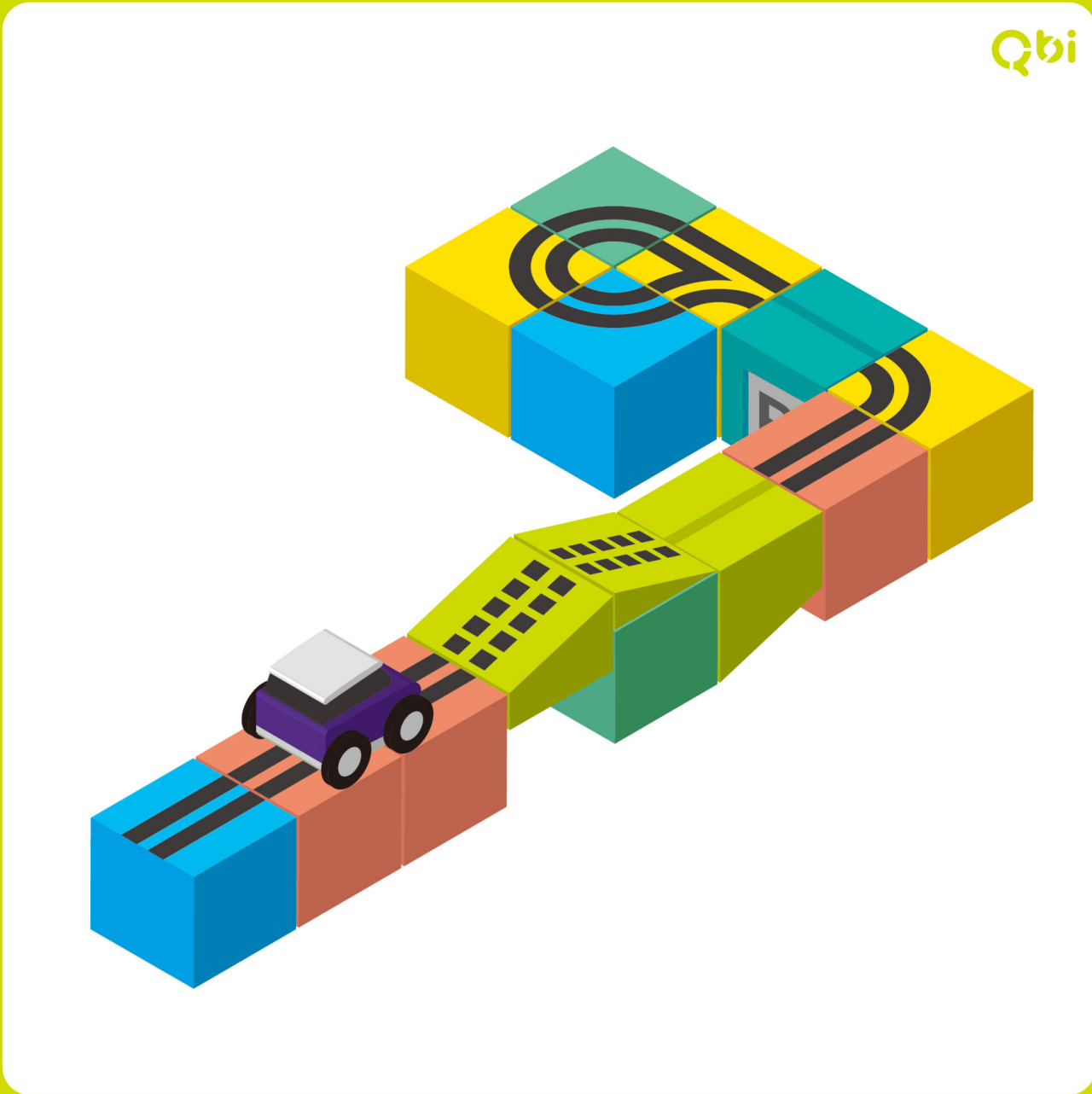
0



1



1



Mission Challenge



MC 001

10 pcs 



1



5



0



4



0



1



0



0



Mission Challenge



MC 002

10 pcs



1



6



0



4



0



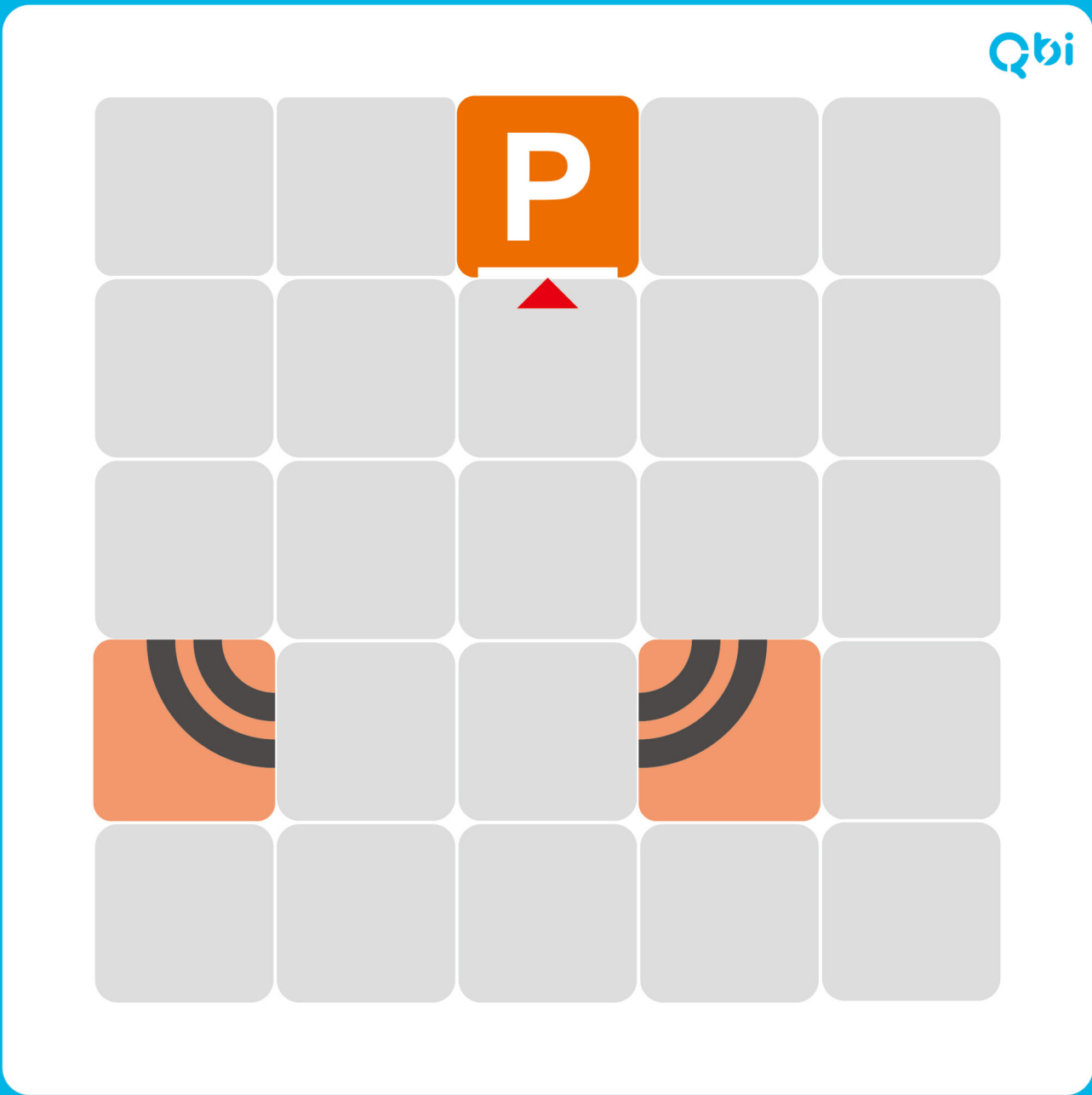
0



0



0



Mission Challenge



MD 001

10 pcs 



1



3



0



?



0



0



0



1

Qbi

The puzzle grid is 5 columns wide and 5 rows high. The top-right cell (row 1, column 5) contains an orange block with a white 'P' and '2F' below it. The cell below it (row 2, column 5) contains a yellow-green block with a red triangle pointing up and a vertical column of 5 black squares. The cell below that (row 3, column 5) contains another yellow-green block with a vertical column of 5 black squares. The cell below that (row 4, column 5) contains a third yellow-green block with a vertical column of 5 black squares. The cell below that (row 5, column 5) is empty. The cell at (row 3, column 3) contains a blue block with two vertical black stripes. All other cells in the grid are empty grey squares.

Mission Challenge



Qbi